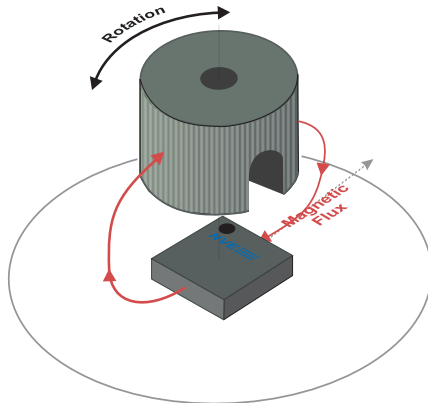
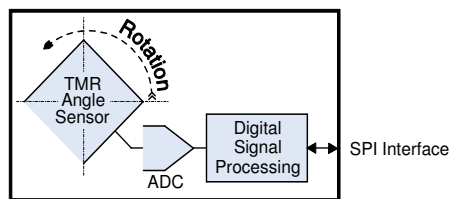


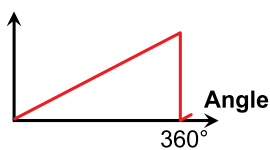
ASR002 Smart TMR Angle Sensor



Block Diagram



Transfer Function



Features

- Measures rotational speeds to 375,000 RPM
- 3.3 volt or 5 volt compatible four-wire SPI interface
- Robust airgap and misalignment tolerances
- Factory calibrated
- Ultraminiature 2.5 x 2.5x 0.8 mm TDFN6 package

Key Specifications

- 0.1° resolution
- $\pm 0.2^\circ$ repeatability
- Robust 60 to 200 Oe magnetic field operating range
- Fast 12.5 kSps sample rate
- Flexible 2.2 to 3.6 V supply range
- Low 4 mA typical supply current
- Full -40°C to $+125^\circ\text{C}$ operating range

Applications

- Rotary encoders
- Robotics
- Motor control
- Automotive applications
- Internet of Things (IoT) end nodes

Description

ASR002 TMR Smart Angle Sensors provide a precise digital angle measurement over a wide range of speeds.

The sensor combines precise, low-power Tunneling Magnetoresistance (TMR) sensing elements with sophisticated digital signal processing.

The sensor is factory calibrated, with coefficients stored in internal memory.

A four-wire SPI interface provides angle data and allows setting device parameters.

The ASR002 is designed for harsh industrial or automotive environments with ESD protection, and full -40°C to $+125^\circ\text{C}$ operating temperature range.



Smart TMR Angle Sensor

Boundary Ratings

Parameter	Min.	Max.	Units
Supply voltage	-12	4.2	Volts
Input and output voltages (MISO, MOSI, SS, SCLK)	-0.5	$V_{cc}+2.5$ up to 5.8	Volts
Storage temperature	-55	150	°C
ESD (Human Body Model)		2000	Volts
Applied magnetic field		Unlimited	Oe

Operating Specifications (T_{min} to T_{max} ; $2.2 < V_{DD} < 3.6$ V unless otherwise stated)

Parameter	Symbol	Min.	Typ.	Max.	Units	Test Condition
Operating temperature	T_{min}, T_{max}	-40		125	°C	
Supply voltage	V_{DD}	2.2		3.6	V	
Supply current	I_{DD}		4	6	mA	Max. at $V_{DD} = 3.6$ V
Power-on Reset supply voltage	V_{POR}		1.4		V	
Brown-out power supply voltage	V_{BOR}	0.75	1	1.36	V	
Start-up time	T_{STA}		1		ms	
Magnetics						
Applied magnetic field strength	H	60		200	Oe	
Accuracy and Repeatability						
Angular resolution	δ		0.1		Angular Degrees	Fixed temperature and bias ¹ 0 to 85°C -40 to 125°C
Angular hysteresis	∇			0.1		
Repeatability			± 0.2			
Angular accuracy, fixed bias ¹	ϵ			± 2 ± 3		
Angular accuracy, variable bias ²				± 6 ± 6	25°C -40 to 125°C	
Speed						
Sample rate			12.5		kSps	
SPI Bus Characteristics						
Bus voltage	V_{BUS}	2.2		5.5	V	
Low level input threshold voltage	V_{IL}	0.8			V	
High level input threshold voltage	V_{IH}			2.2	V	
Low level output current	I_{OL}	3			mA	$V_{OL} = 0.4$ V
I/O capacitance	$C_{I/O}$			10	pF	
SPI Setup and Hold Timing						
Data transfer rate	DR			2	Mbits/s	Full duplex
SCLK Rise time	t_R				ns	See figure 7
SCLK fall time	t_F				ns	
SCLK low time	t_{CL}	200			ns	
SCLK fall time	t_{CH}	200			ns	
SS to SCLK setup	t_{SE}	80			ns	
SCLK to MISO valid	t_{SDD}			170	ns	
SS to MISO tri-state	t_{SDZ}			170	ns	
SCLK to MOSI hold time	t_{SDH}	80			ns	
MOSI to SCLK setup	t_{SDS}	80			ns	
SCLK to SS hold time	t_{SH}	80			ns	
SS to MISO valid	t_{SEZ}			170	ns	
RAM Timing						
Address setup time	t_{ADDR}			3	μ s	See figure 4
Data read time	t_{READ}			10	μ s	
Nonvolatile Memory Characteristics						
Address setup time	t_{ADDR}			3	μ s	See figure 5
Data read time	t_{READ}			10	μ s	
Data write time	t_{NVM}			20	ms	
Endurance			10000		Cycles	
Package Thermal Characteristics						
Junction-to-ambient thermal resistance	θ_{JA}		320		°C/W	
Package power dissipation			500		mW	



Smart TMR Angle Sensor

Specification Notes:

1. "Fixed Bias" means a fixed airgap within between the bias magnet and sensor so the magnitude of the magnetic field at the sensor is constant within the specified field range of the parts. The highest accuracy is obtained using fields closest to factory calibration.
2. "Variable Bias" means the magnitude of the magnetic field at the sensor can vary across the entire specification range.

ASR002 Overview

The ASR002 is a non-contact angle sensor designed for high speed applications where size is limited. The heart of the ASR002 is a tunneling magnetoresistive (TMR) sensor. In a typical configuration, an external magnet provides a magnetic field of 30 to 200 Oe in the plane of the sensor, as illustrated below for a bar magnet and a diametrically-magnetized disk magnet. Factory-programmed signal conditioning is combined with a temperature sensor and digital linearization to produce high speed, accuracy, and precision in a tiny 2.5 x 2.5 mm TDFN package.

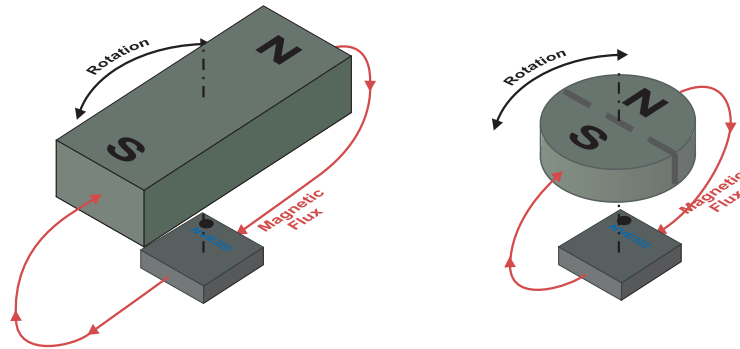


Figure 1. Sensor operation.

ASR002 Operation

A detailed block diagram is shown below:

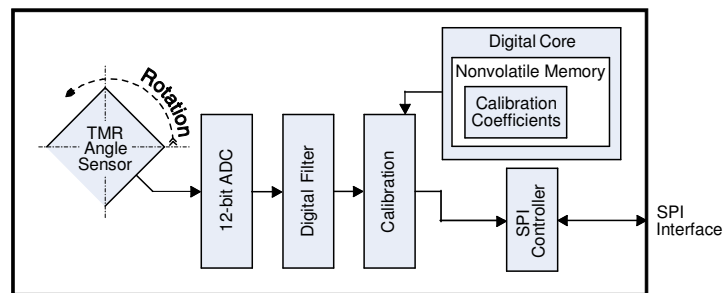


Figure 2. Detailed block diagram.

TMR Angle Sensor Element

ASR002 sensors use unique TMR sensor elements that are inherently high speed and low noise. The digital core calculates the angle from sensor element Sine and Cosine vectors, and the raw sensor data are available from separate memory locations.

ADC

The sensor output is digitized with a 12-bit ADC. The extra bits ensure precision and computational accuracy.

Digital Filter

A first-order Infinite Impulse Response (IIR) digital filter with a programmable cutoff frequency can be used for ultralow noise if high-frequency operation is required. The factory default is the filter turned off.

Rotation Direction

The ASR002 can provide increasing angle values for either clockwise or counterclockwise field rotations. Counterclockwise is defined as a rotating field vector through pins 1-3-4-6, and clockwise through pins 1-6-4-3. The rotation direction can be programmed using the θ_{DIR} parameter.

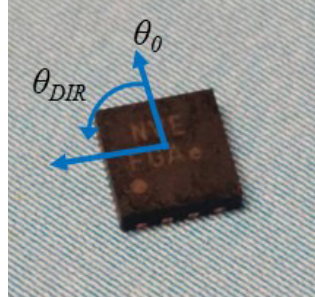


Figure 3. Zero-angle reference (θ_0) and rotation direction (θ_{DIR}). The rotational center of the sensor is the package center.

Zero-Angle Reference Point

A programmable parameter θ_0 sets the zero-degree reference or angular offset. This is the angle of “discontinuity,” that is, where the angle output changes from 360° to 0°. The default θ_0 value is zero for magnetic fields pointing from pin 1 to pin 6.

Direction and Hysteresis

The Direction output indicates direction of rotation. A hysteresis setting can be changed to prevent small changes from causing the Direction output to “chatter,” especially at low speed.

Digital Filter

The digital filter is an Infinite impulse response (IIR) weighted running average filter, which can reduce mechanical and electrical noise depending on the required speed.

The filtered output is calculated as follows:

$$\theta_n = \theta/m + [(m-1)/m]\theta_{n-1}$$

Where θ = is the measured angle; θ_n = the filtered angle; θ_{n-1} is the previous value of the filtered angle; and m is a constant that determines the cutoff frequency as follows:

$$f_{CUTOFF} = f_{SAMPLE}/(2\pi m)$$

Where f_{CUTOFF} is the filter cutoff frequency and f_{SAMPLE} is the sensor ADC sampling rate (approximately 12500/s). So for example, if $m = 10$, the cutoff frequency is approximately 200 Hz.

$m = 1$ disables filter so the output is simply updated with each sample.

A Simple SPI Interface

The SPI interface is an industry standard four-wire, full-duplex 2 megabit per second connection with the sensor as the slave to an external master such as a microcontroller. SPI data (MOSI and MISO) and the Clock (SCLK) are 2.2 volt to five-volt compliant. The digital angle is the default two byte response.

The ASR002 uses an industry-standard “Mode 0” interface (data is sampled at the leading rising edge of the clock; CPOL=0 and CPHA=0). In accordance with industry standards, slave select (SS) is active-low, and bit order and byte order are from MSB to LSB.

Details are shown in the following diagrams:

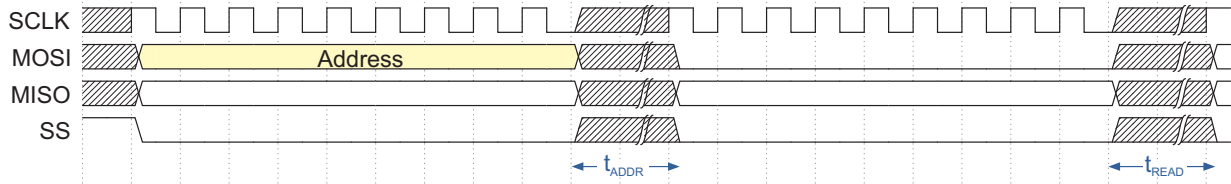


Figure 4a. Sending the address for a read.

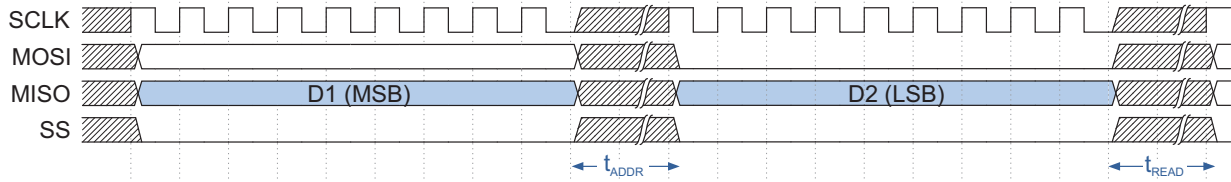


Figure 4b. Reading data.

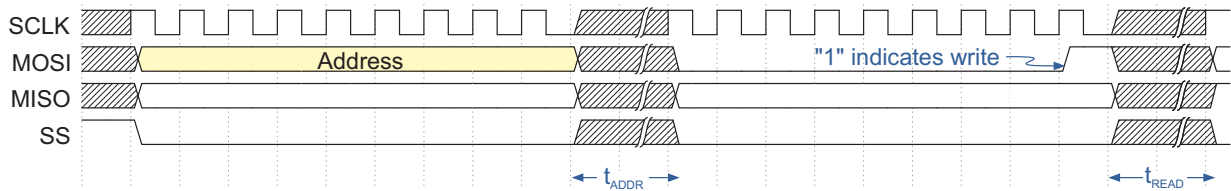


Figure 5a. Sending the address for a write.

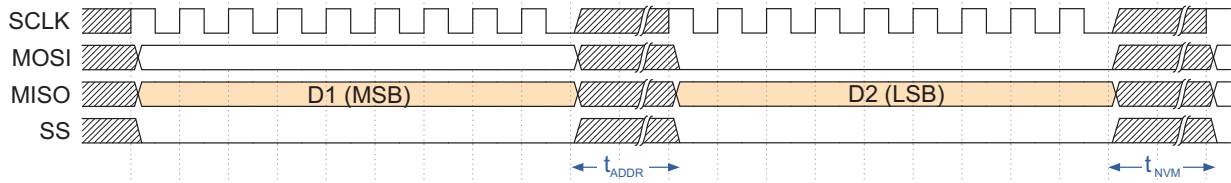


Figure 5b. Writing data.

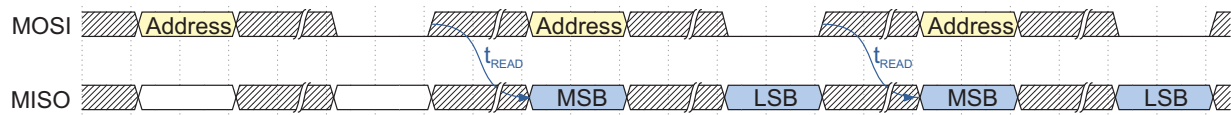


Figure 6. Continuous read.

SPI setup and hold timing constraints are shown in Figure 7:

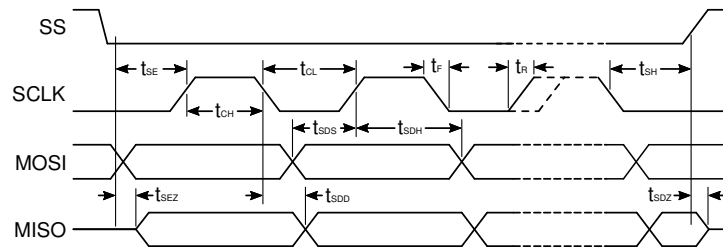


Figure 7. SPI setup and hold timing.

A schematic of a typical interface to a 3.3-volt or five-volt microcontroller is shown in the Applications section.

Straightforward Reading and Writing

The sensor is reset on a falling edge of SS. All reads and writes are initiated by the master pulling SS “LOW” and sending an eight-bit address to the ASR002 plus a second byte. The least significant bit of the second address byte indicates whether the address request is for a read or a write (“0” is a read; “1” is a write). The slave responds with two bytes of data.

As shown in figures 4 and 5, and the specification table, a 3 μ s delay (t_{ADDR}) is needed between address bytes; 10 μ s (t_{READ}) should be allowed before data can be read, and 20 ms (t_{NVM}) should be allowed for writing parameters to the nonvolatile memory.

The angle is stored in Address 0 of the sensor, and reading the angle is a simple four-byte sequence. The master writes the two zero bytes for the “0” angle address, and reads the two-byte angle, which is expressed in tenths of degrees. This can be repeated to continuously read the angle as shown in Figure 6.

Memory Map

The ASR002 memory provides access to angle data and user-programmable parameters. The memory is accessed via SPI as described in the SPI interface section.

Parameter	Symbol	Default	Read/Write	Range	Address	Description
Data						
Angle	θ	N/A	R	0 – 3600	0x00	In tenths of a degree
Raw Sin Vector	$\text{Sin}\theta$			Approx. 1500 – 2500	0x01	Raw outputs centered at approx. 2048 with peak-peak amplitudes of approx. 1000.
Raw Cos Vector	$\text{Cos}\theta$			0 – 1	0x02	
Direction	Dir			0 – 1	0x03	0 = decreasing angle 1 = increasing angle
User-Programmable Parameters						
Rotation Direction	θ_{DIR}	0	R/W	0 – 1	0x40 [bit 0]	0 → increasing CCW; 1 → increasing CW (see Fig. 3)
Angular Offset	θ_0	0		0 – 3600	0x41 [bits 13:0]	Point at which angle is zero (see Fig. 3)
Digital Filter Constant	m	0		1 – 255	0x42	$f_{\text{CUTOFF}} = f_{\text{SAMPLE}} / (2\pi m)$; $f_{\text{SAMPLE}} = \text{approx. } 12.5 \text{ kSps}$ m = 1 disables filter
Direction Hysteresis	δ_{DIR}	25		0 – 255 (0 – 25.5°)	0x43	Hysteresis of the “Dir” output; in tenths of a degree
Read-Only Memory						
Lot code			R		0x80 – 0x85	Date code in ASCII; right-most character in address 80; left-most in address 85; format YYWWXX, where YY = year; WW = work week; XX = internal code.

Table 1. ASR002 Memory Locations.



Smart TMR Angle Sensor

Power-Up and Initialization

Absolute position

Unlike some encoder types, ASR002 sensors detect absolute position and maintain position information when the power is removed. The sensor powers up indicating the correct position.

Nonvolatile parameters

All parameters are nonvolatile so they can be set once (via SPI), and remain for the life of the product if desired.

Minimizing Noise

Several steps allow taking advantage of ASR002's inherent low noise:

- V_{DD} should be bypassed with a 0.1 μ F capacitor (preferably nonmagnetic) placed as close as possible to the V_{DD} and GND pins. Inadequate bypassing can cause noise or anomalous device behavior.
- Use a circuit board ground plane.
- Ground the sensor's center pad so the leadframe acts as a shield.

Magnet Selection

The sensor's wide operating field range of 60 to 200 Oe allows inexpensive magnets and operation over a wide range of magnet spacing. The figures below show the magnetic field for various magnet geometries and distances for inexpensive C5/Y25 grade ferrite magnets:

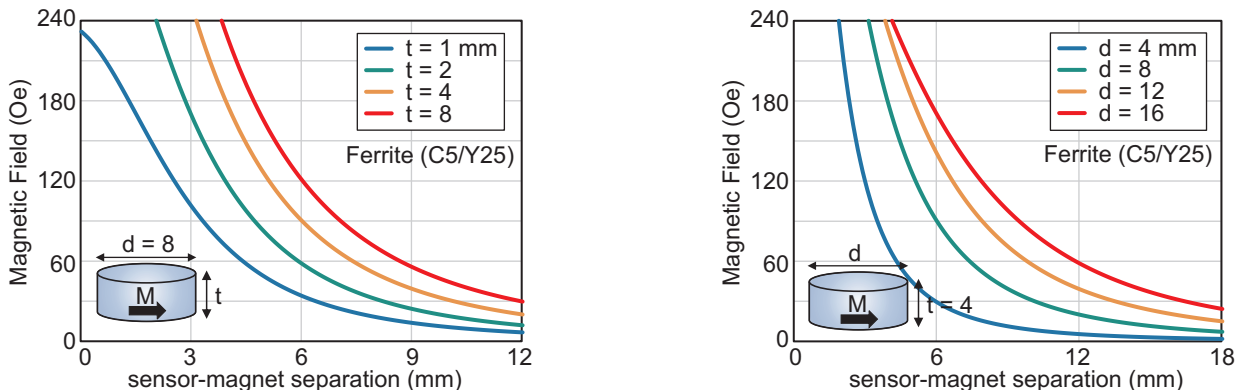


Figure 8. Magnetic fields for various geometries of C5/Y25 ferrite magnets plotted for the distance between the magnet and sensor. Eight-millimeter diameter magnets of various thicknesses are shown at left, and four-millimeter thick magnets of various diameters are shown at right.

Field varies less with distance for larger magnets, so maximizing magnet size within the mechanical constraints of the system maximizes accuracy.

Higher-grade magnets can be used for high-temperature applications or large magnet-sensor separations. The graph below shows field strengths with various materials:

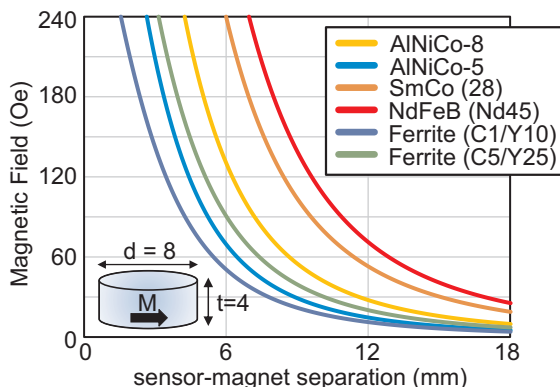


Figure 9. Magnetic fields from an 8 millimeter diameter, 4 millimeter thick magnet for increasing magnet-sensor separation. NdFeB materials produce the largest magnetic fields and separations. SmCo and AlNiCo materials offer the highest operating temperatures. Ferrite magnets are the most cost-effective.

Our free Web app can be used to determine the optimum separations for various magnet sizes and materials:

<https://www.nve.com/spec/calculators.php>

[NVE's Online Store](#) stocks popular magnets.

Application Circuits

Typical Microcontrollers Interface

A typical microcontroller interface is shown below:

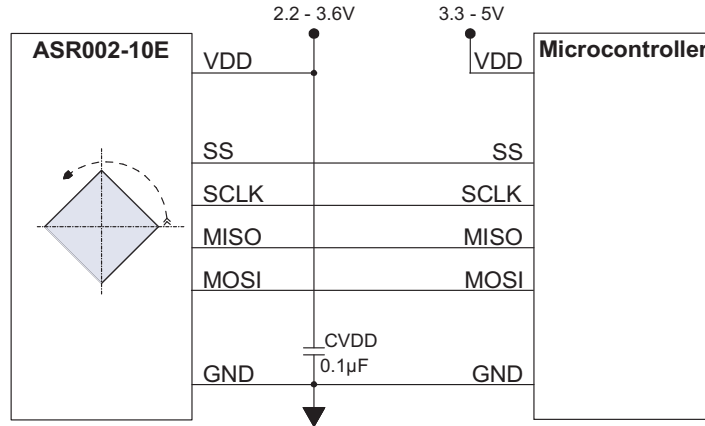


Figure 10. Typical microcontroller interface.

The ASR002 is configured as a Slave and the microcontroller should be configured as the Master. The ASR002 SPI interface is compatible with 3.3 or five-volt microcontrollers.

Typical Read and Write Communications Pseudocode

```

//SPI clock set elsewhere (2 MHz max.)
//SPSR = SPI Status Register; SPIF = SPI Status Register Interrupt flag
//SS set low (active) elsewhere
{
    case COMM_GET_MEM:           //Routine to READ memory
    SPDR=buffer[1];              //Sends the address to read from
    while(! (SPSR & (1<<SPIF))); //Waits for transmission
    _delay_us(3);                //Allow 3 microseconds between address bytes

    SPDR=0x00;                   //'0' for second address byte (indicates read)
    while(! (SPSR & (1<<SPIF))); //Waits for transmission
    _delay_us(10);               //Allows 10 microseconds for the address to be sent

    SPDR=0x00;                   //Waits for transmission to complete
    while(! (SPSR & (1<<SPIF))); //Allows 10 microseconds for data to be sent
    _delay_us(10);               //Reads the first byte of data (MSB)
    MSB=SPDR;

    SPDR=0x00;                   //Allows 10 microseconds for data to be sent
    while(! (SPSR & (1<<SPIF))); //Reads the second byte of data (LSB)
    _delay_us(10);               //Stores data in the buffer
    LSB=SPDR;

    buffer[0]=MSB;
    buffer[1]=LSB;

    *output_len=2;               //Number of bytes to transmit
    break;

    case COMM_SET_MEM:           //WRITE memory routine (to set sensor parameters)
    SPDR=buffer[1];              //Puts the address to read from in the buffer
    while(! (SPSR & (1<<SPIF))); //Wait for transmission to be complete
    _delay_us(3);                //Allow address byte to be sent

    SPDR=0x01;                   //'1' for second address byte (write bit)
    while(! (SPSR & (1<<SPIF))); //Wait for transmission to complete
    _delay_us(10);               //Allows time for data to be sent

    SPDR=buffer[2];              //Read first data byte(MSB)
    while(! (SPSR & (1<<SPIF))); //Allows time for the data to be sent
    _delay_us(10);

    SPDR=buffer[3];              //Read second data byte(LSB)
    while(! (SPSR & (1<<SPIF))); //Allows 20 MILLIseconds to write to nonvolatile memory
    _delay_ms(20);

    break;
}

```



Smart TMR Angle Sensor

Illustrative Arduino Code for Continuous Read

```

/*****
Continuously read the angle from an NVE ASR002 Smart Angle Sensor
Arduino Uno connections: pin 10=SS; pin 11=MOSI; pin 12=MISO; pin 13=SCLK
*****/

#include <SPI.h>
int angle;

void setup() {
  pinMode(10, OUTPUT); //Pin 10 = Sensor SS
  SPI.begin ();

  //Set clock rate at 2 Mbits/s; MSB first; Mode 0
  SPI.beginTransaction(SPISettings(2000000, MSBFIRST, SPI_MODE0));
  digitalWrite(CS, HIGH); //Disable to reset the sensor
  digitalWrite(10, LOW); //Re-enable sensor
}

void loop() {
  angle = (SPI.transfer (0))<<8; //Send 0 for address angle; receive angle MSB
  delayMicroseconds (3); //Allow 3 us between address bytes
  angle |= SPI.transfer (0); //2nd address byte (0 for read); receive angle LSB
  delayMicroseconds (10); //Allow 10 us for next data
}

```

Illustrative Arduino Code to Zero the Sensor

```

/*****
Zeros an ASR002 at its current location to establish a "home position."
Arduino Uno connections: pin 11=MOSI; pin 12=MISO; pin 13=SCLK; pins 9 & 10=SS
Includes a simple procedure to read the angle.
*****/
#include <SPI.h>
int angle;

void setup() {
  pinMode(10, OUTPUT); //Pin 10 = Sensor SS
  SPI.begin ();

  //Set clock rate to 2 Mbits/s; MSB first; Mode 0
  SPI.beginTransaction(SPISettings(2000000, MSBFIRST, SPI_MODE0));
  digitalWrite(10, HIGH); //Disable to reset the sensor
  digitalWrite(10, LOW); //Re-enable sensor

  //Read starting angle
  SPI.transfer (0); //Send 0 for address angle to read starting angle
  delayMicroseconds (3); //Allow 3 us between address bytes
  angle = (SPI.transfer (0x41))<<8; Read starting angle MSB and point to offset address
  delayMicroseconds (3); //Allow 3 us between address bytes
  angle |= SPI.transfer (1); //Read angle LSB; 2nd address byte = 1 for write
  delayMicroseconds (10); //Allow 10 us for next data

  //Reset offset
  SPI.transfer (0); //Write offset MSB
  delayMicroseconds (3); //Allow time between bytes
  SPI.transfer (0); //Write offset LSB
  delay (20); //20 ms NVM delay

  //Write measured angle to offset parameter to zero the sensor
  angle=getAngle(); //Read angle now that offset has been set to zero
  SPI.transfer (0x41); //Point to offset address
  delayMicroseconds (3); //Allow time between address bytes
  SPI.transfer (1); //2nd address byte = 1 for write
  delayMicroseconds (10);
  SPI.transfer (0x41); //Write to offset parameter to zero the sensor
  delayMicroseconds (3);
  SPI.transfer (angle & 0xFF); //Write LSB
  delay (20); //20 ms NVM delay
}

void loop() {}

//Procedure to read the angle
int getAngle(){
  int angle;
  angle = (SPI.transfer (0))<<8; //Send 0 for address angle; receive angle MSB
  delayMicroseconds (3); //Allow 3 us between address bytes
  angle |= SPI.transfer (0); //2nd address byte (0 for read); receive angle LSB
  delayMicroseconds (10); //Allow 10 us for next data
  return angle;
}

```

In Case of Difficulty

Random data, or measured angles outside the allowable 0 to 3600 range.

- The SPI clock may be too fast (the ASR002 maximum clock rate is specified as 2 Mbits/s).
- Ensure the Master is operating in the correct mode (Mode 0).

Random data, or measured angles outside the allowable 0 to 3600 range on the first readings after the sensor is selected.

- The sensor is reset on a falling edge of SS. Toggling SS HIGH, then LOW will ensure the sensor is reset.

MSB/LSB bytes are reversed.

- The MSB should be read first. SPI devices use different byte orders, but the ASR002 follows the most common convention of MSB first.

Angle data is shifted by one or more bits.

- This is usually because the sensor has not completed internal shifting of bits into the correct positions. Ensure there is enough settling time between writing the address and reading the data (10 μ s minimum).

Garbled data on first startup of Master.

- Data can be left in the sensor if the Master microcontroller is reset and the sensor is not. This can be corrected by doing a “dummy read” as part of the microcontroller startup sequence, or toggling SS HIGH then LOW to reset the sensor.

Parameters do not appear to be written correctly.

- Ensure that the Write bit is set in the second (LSB), i.e., the second address byte is a “1.”
- Ensure there is adequate settling time before reading or using a written parameter (10 milliseconds minimum). Parameters are stored in nonvolatile memory, not RAM, and writing to nonvolatile memory is much slower.



Smart TMR Angle Sensor

Evaluation Support

Smart Angle Sensor Evaluation Kit

This simple board includes an ASR002-10E Smart Angle Sensor, a microcontroller that interfaces to the Sensor via SPI, and to a PC via USB. The kit includes a diametrically-magnetized cylindrical horseshoe magnet and fixturing. A PC-based user interface provides two-way communication with the sensor to display the sensor outputs and change the sensor's parameters.

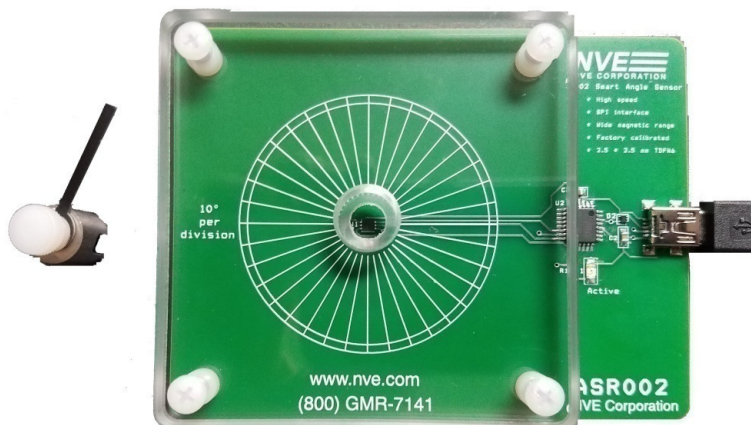


Figure 11. AG956-07E: Smart Angle Sensor Evaluation Kit.

Socket Board

The AG954-07E provides a TDFN6 socket for easy interface to sensors such as the ASR002-10E without soldering:

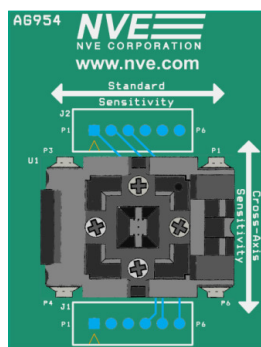


Figure 12. AG954-07E: TDFN socket board
1.5" x 2" (38 mm x 50 mm)(actual size)

Bare Circuit Board

The AG035-06 bare circuit board provides easy connections to TDFN6 devices such as the ASR002-10E:



Figure 13. AG035-06 TDFN6 bare circuit board
1.57" x 0.25" (40mm x 6 mm) (actual size).



Smart TMR Angle Sensor

Magnets

NVE stocks five popular magnets for use with its angle sensors:

NVE Part Number	Compatible Magnet Holder	Diameter (mm)	Length (mm)	Typ. sensor distance (mm; 120 Oe nom. field)	Material and Configuration
12526	4 mm	4	4	3	C5/Y25 ferrite disk magnets
12249	N/A	12.5	3.5	4	
12527	8 mm	8	4	5	
12528	8 mm	8	8	6	
12426*	N/A	11	11	8	Alnico-5 round horseshoe magnet with mounting hole

*Included in the AG956-07E Smart Angle Sensor Evaluation Kit.

Table 2. Popular magnets for angle sensing.

Magnet Holders

NVE offers two magnet holders for evaluation and prototyping. The holders are machined aluminum. Set screws secure the magnets in the holders and allow magnet position adjustments. There are threaded mounting holes for a thumbscrew to turn the magnet, or the hole can be used to attach the holder to a rotating shaft. A “clockhand” indicator helps track magnet rotation:

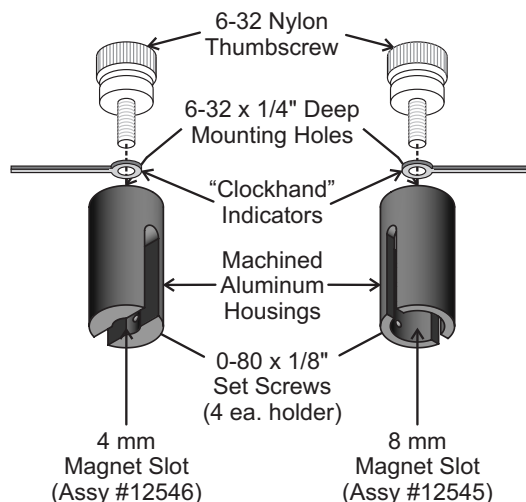


Figure 14. 4 mm magnet holder (part #12546; left) and 8 mm magnet holder (part #12545; right). 0.44" dia. x 0.88" tall (11 mm x 22 mm) outside dimensions; actual size.

The holders are compatible with several popular diametrically-magnetized disk magnets and can be used in the AG956-07E Evaluation Kit:

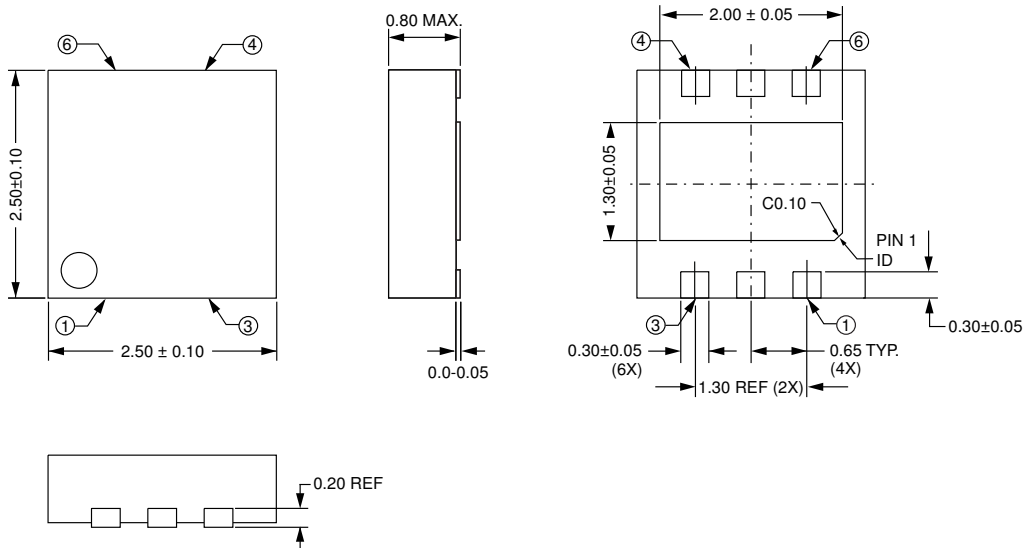
Holder Part Number	Outside Dimensions	Compatible Magnets (NVE part #s)	Magnet Diameter (mm)	Max. Magnet Length (mm)
12546	11 mm dia. x 22 mm tall	12526	4	4
12545		12527; 12528	8	8

Table 3. Magnet holders.



Smart TMR Angle Sensor

2.5 x 2.5 mm TDFN6 Package



Pad	Symbol	Description
1	GND	Ground/ V_{SS}
2	SCLK	SPI Clock Input
3	MISO	Sensor SPI Data Output
4	VDD	Power Supply (bypass with a 0.1 μ F capacitor)
5	MOSI	Sensor SPI Data Input
6	SS	Sensor Select Input (low to select)
Center pad		Internal leadframe connection; connect to GND to minimize noise.

Notes:

- Dimensions in millimeters.
- Soldering profile per JEDEC J-STD-020C, MSL 1.





Smart TMR Angle Sensor

Ordering Information

ASR002 - 10E TR13

Product Family

ASR = Smart Angle Sensors

Base Part Number

002 = High speed, medium accuracy

Field Range Identifier

Blank = General Purpose (60 to 200 Oe)

Part Package

10E = RoHS-Compliant 2.5 x 2.5 mm TDFN6 Package

Bulk Packaging

TR13 = 13" Tape and Reel Package



Smart TMR Angle Sensor

Revision History

SB-00-081-E Feb. 2019	Change <ul style="list-style-type: none"> • Improved “Magnet Selection” section. • Added magnet and magnet holder information (p. 18).
SB-00-081-D Feb. 2019	Change <ul style="list-style-type: none"> • Added details on center pad and grounding recommendation to minimize noise.
SB-00-081-C Jan. 2019	Change <ul style="list-style-type: none"> • Faster RAM timing. • Reduced data transfer rate from 2.5 to 2 Mbits/s for more design margin. • Corrected number of bits in angular offset. • Added Arduino code to zero the Sensor. • Added “In Case of Difficulty” section • Dropped daisy-chained SPI application diagram (not supported). • Added AG954-07E socket board. • Typographic and cosmetic changes.
SB-00-081-B Jan. 2019	Change <ul style="list-style-type: none"> • Added typical communications pseudocode. • Typographic and cosmetic changes.
SB-00-081-A Jan. 2019	Change <ul style="list-style-type: none"> • Expanded and updated SPI timing specifications. • Added detailed SPI timing diagrams. • Tightened typ. supply current specification to 4 mA. • Revised minimum operating field to 60 Oe. • Added sensor direction output and hysteresis parameter. • Added raw Sin and Cos vector outputs. • Added illustrative microcontroller code. • Finalized pinout. • Added evaluation kit and board. • Dropped customer calibration capability (unnecessary). • Various typographic corrections. • “Rev. A” release.
SB-00-081-PRELIM Oct. 2018	Change <ul style="list-style-type: none"> • Preliminary release.



Smart TMR Angle Sensor

Datasheet Limitations

The information and data provided in datasheets shall define the specification of the product as agreed between NVE and its customer, unless NVE and customer have explicitly agreed otherwise in writing. All specifications are based on NVE test protocols. In no event however, shall an agreement be valid in which the NVE product is deemed to offer functions and qualities beyond those described in the datasheet.

Limited Warranty and Liability

Information in this document is believed to be accurate and reliable. However, NVE does not give any representations or warranties, expressed or implied, as to the accuracy or completeness of such information and shall have no liability for the consequences of use of such information.

In no event shall NVE be liable for any indirect, incidental, punitive, special or consequential damages (including, without limitation, lost profits, lost savings, business interruption, costs related to the removal or replacement of any products or rework charges) whether or not such damages are based on tort (including negligence), warranty, breach of contract or any other legal theory.

Right to Make Changes

NVE reserves the right to make changes to information published in this document including, without limitation, specifications and product descriptions at any time and without notice. This document supersedes and replaces all information supplied prior to its publication.

Use in Life-Critical or Safety-Critical Applications

Unless NVE and a customer explicitly agree otherwise in writing, NVE products are not designed, authorized or warranted to be suitable for use in life support, life-critical or safety-critical devices or equipment. NVE accepts no liability for inclusion or use of NVE products in such applications and such inclusion or use is at the customer's own risk. Should the customer use NVE products for such application whether authorized by NVE or not, the customer shall indemnify and hold NVE harmless against all claims and damages.

Applications

Applications described in this datasheet are illustrative only. NVE makes no representation or warranty that such applications will be suitable for the specified use without further testing or modification.

Customers are responsible for the design and operation of their applications and products using NVE products, and NVE accepts no liability for any assistance with applications or customer product design. It is customer's sole responsibility to determine whether the NVE product is suitable and fit for the customer's applications and products planned, as well as for the planned application and use of customer's third party customers. Customers should provide appropriate design and operating safeguards to minimize the risks associated with their applications and products.

NVE does not accept any liability related to any default, damage, costs or problem which is based on any weakness or default in the customer's applications or products, or the application or use by customer's third party customers. The customer is responsible for all necessary testing for the customer's applications and products using NVE products in order to avoid a default of the applications and the products or of the application or use by customer's third party customers. NVE accepts no liability in this respect.

Limiting Values

Stress above one or more limiting values (as defined in the Absolute Maximum Ratings System of IEC 60134) will cause permanent damage to the device. Limiting values are stress ratings only and operation of the device at these or any other conditions above those given in the recommended operating conditions of the datasheet is not warranted. Constant or repeated exposure to limiting values will permanently and irreversibly affect the quality and reliability of the device.

Terms and Conditions of Sale

In case an individual agreement is concluded only the terms and conditions of the respective agreement shall apply. NVE hereby expressly objects to applying the customer's general terms and conditions with regard to the purchase of NVE products by customer.

No Offer to Sell or License

Nothing in this document may be interpreted or construed as an offer to sell products that is open for acceptance or the grant, conveyance or implication of any license under any copyrights, patents or other industrial or intellectual property rights.

Export Control

This document as well as the items described herein may be subject to export control regulations. Export might require a prior authorization from national authorities.

Automotive Qualified Products

Unless the datasheet expressly states that a specific NVE product is automotive qualified, the product is not suitable for automotive use. It is neither qualified nor tested in accordance with automotive testing or application requirements. NVE accepts no liability for inclusion or use of non-automotive qualified products in automotive equipment or applications.

In the event that customer uses the product for design-in and use in automotive applications to automotive specifications and standards, customer (a) shall use the product without NVE's warranty of the product for such automotive applications, use and specifications, and (b) whenever customer uses the product for automotive applications beyond NVE's specifications such use shall be solely at customer's own risk, and (c) customer fully indemnifies NVE for any liability, damages or failed product claims resulting from customer design and use of the product for automotive applications beyond NVE's standard warranty and NVE's product specifications.



Smart TMR Angle Sensor

An ISO 9001 Certified Company

NVE Corporation
11409 Valley View Road
Eden Prairie, MN 55344-3617 USA
Telephone: (952) 829-9217
www.nve.com
e-mail: sensor-info@nve.com

©NVE Corporation
All rights are reserved. Reproduction in whole or in part is prohibited without the prior written consent of the copyright owner.

SB-00-081_ASR002-10_RevE

Feb. 2019

Headquarter Switzerland:
Pewatron AG
Thurgauerstrasse 66
CH-8050 Zurich
Phone +41 44 877 35 00
info@pewatron.com

Office Germany:
Pewatron Deutschland GmbH
Edisonstraße 16
D-85716 Unterschleißheim
Phone +49 89 374 288 87 00
info.de@pewatron.com



PEWATRON
SENSORS · POWER SOLUTIONS

We are here for you. Addresses and Contacts.

Sales Germany & Austria

Geometrical sensors Other products

Kurt Stritzelberger
Phone +49 89 374 288 87 22
kurt.stritzelberger@pewatron.com

Pressure sensors Other products

Gerhard Vetter
Phone +49 89 374 288 87 26
gerhard.vetter@pewatron.com

Gas sensors and modules

Peter Felder
Phone +41 44 877 35 05
peter.felder@pewatron.com

Sales Switzerland & Liechtenstein

Postcode 3000 – 9999

Basil Frei
Phone +41 44 877 35 18
basil.frei@pewatron.com

Postcode 1000 – 2999

Christian Mohrenstecher
Phone +41 76 444 57 93
christian.mohrenstecher@pewatron.com

Sales International Key Accounts

Peter Felder
Phone +41 44 877 35 05
peter.felder@pewatron.com

Sales Other Countries / Product Management

Pressure Sensors Load Cells

Philipp Kistler
Phone +41 44 877 35 03
philipp.kistler@pewatron.com

Gas sensors Gas sensor modules

Dr. Thomas Clausen
Phone +41 44 877 35 13
thomas.clausen@pewatron.com

Flow / Level / Medical products

Dr. Adriano Pittarelli
Phone +49 89 374 288 87 67
adriano.pittarelli@pewatron.com

Power supplies

Sebastiano Leggio
Phone +41 44 877 35 06
sebastiano.leggio@pewatron.com

Linear position sensors Angle sensors

Eric Letsch
Phone +41 44 877 35 14
eric.letsch@pewatron.com

Accelerometers Sensor elements

Christoph Kleye
Phone +49 89 374 288 87 61
christoph.kleye@pewatron.com

Drive technology

CH Postcode 5000 – 9999 / DE

Roman Homa
Phone +41 76 444 00 86
roman.homa@pewatron.com

Drive technology

CH Postcode 1000 – 4999 / AT / IT / FR

Christian Mohrenstecher
Phone +41 76 444 57 93
christian.mohrenstecher@pewatron.com

Harald Thomas

Phone +49 89 374 288 87 23
harald.thomas@pewatron.com