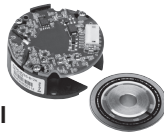


ABSOLUTE TYPE

N35ST Model

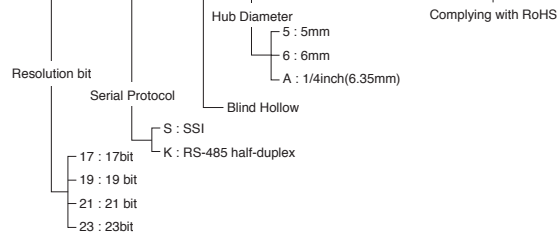


23 bit Single turn

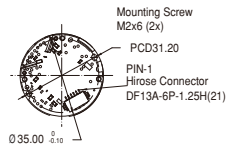
- Module type
- Compact (φ35)

Model

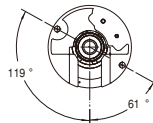
N35ST- [] [] [] **-B** [] **-000-00E**



Dimension



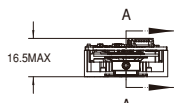
Front-1



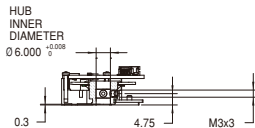
Back-1



Iso-1

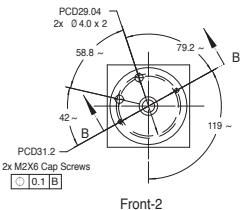


Side-1

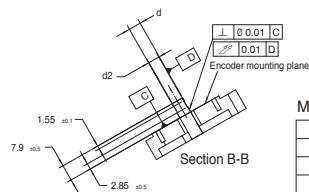


Section A-A

Mounting



Front-2



Motor Shaft Spec.

d (mm)	d2 (mm)
5 ^{±0.01}	4.5±0.2
6 ^{±0.01}	5.5±0.2
7 ^{±0.01}	5.85±0.2

Electrical Spec.

Current Consumption	120mA Max (No load)
Supply Voltage	5V ± 0.5V
Electrically Permissible Speed	< 12000 min ⁻¹
Initialization Time	< 500 ms

Mechanical Spec.

System Accuracy (With electrical correction)	±300 Arc-sec (T _{amb} = 25°C)	
Mechanical Permissible Speed	< 12000 min ⁻¹	
Shaft Play	Axial	≤ ±0.15 mm
	Radial	≤ ±0.05 mm

Connection

Pin No	SSI	RS-485
1	GND, Ground	GND, Ground
2	VCC, Encoder Supply	VCC, Encoder Supply
3	DOUT-	Data-
4	DOUT+	Data+
5	SCL-	NA
6	SCL+	NA

*Recommended mating connector:

Hirose Part No : DF13-6S-1.25C (CL0536-0005-5-00)

Hirose (Terminal Pin for Wire 26~30AWG) : DF13-2630SCF (CL No.536-0300-5)

Environmental Spec.

Storage Temperature	- 40 to + 105°C
Operating Temperature	- 40 to + 105°C
Relative Air Humidity (Non-Condensing)	90%RH (T _{amb} = 40°C)
Vibration	10G; 10 to 2000Hz
Shock	6ms; Half Sine; 200G
Electrostatic Discharge (Module level)	± 8kV (contact) ± 12kV (air)

Data communication

Interface	SSI		RS-485	
	Interface	Circuit	Interface	Circuit
Serial Clock(MA)	Transceiver(P/N:SN65LBC179Q)	Serial Data(DATA+)	Transceiver(P/N:ISL8485E)	
Serial Data(SLO)	Transceiver(P/N:SN65LBC179Q)	Serial Data(DATA-)	Transceiver(P/N:ISL8485E)	

[Note]

There are an Alignment Fixture and a Phase calibration kit (Biss-C or RS-485) available separately. Please contact our Sales for inquiries about this product of details.

Headquarter Switzerland:
Pewatron AG
Thurgauerstrasse 66
CH-8050 Zurich
Phone +41 44 877 35 00
info@pewatron.com

Office Germany:
Pewatron Deutschland GmbH
Edisonstraße 16
D-85716 Unterschleißheim
Phone +49 89 374 288 87 00
info.de@pewatron.com



PEWATRON
SENSORS · POWER SOLUTIONS

We are here for you. Addresses and Contacts.

Sales Germany & Austria

Geometrical sensors Other products

Kurt Stritzelberger
Phone +49 89 374 288 87 22
kurt.stritzelberger@pewatron.com

Pressure sensors Other products

Gerhard Vetter
Phone +49 89 374 288 87 26
gerhard.vetter@pewatron.com

Gas sensors and modules

Peter Felder
Phone +41 44 877 35 05
peter.felder@pewatron.com

Sales Switzerland & Liechtenstein

Postcode 3000 – 9999

Basil Frei
Phone +41 44 877 35 18
basil.frei@pewatron.com

Postcode 1000 – 2999

Christian Mohrenstecher
Phone +41 76 444 57 93
christian.mohrenstecher@pewatron.com

Sales International Key Accounts

Peter Felder
Phone +41 44 877 35 05
peter.felder@pewatron.com

Sales Other Countries / Product Management

Pressure Sensors Load Cells

Philipp Kistler
Phone +41 44 877 35 03
philipp.kistler@pewatron.com

Gas sensors Gas sensor modules

Dr. Thomas Clausen
Phone +41 44 877 35 13
thomas.clausen@pewatron.com

Flow / Level / Medical products

Dr. Adriano Pittarelli
Phone +49 89 374 288 87 67
adriano.pittarelli@pewatron.com

Power supplies

Sebastiano Leggio
Phone +41 44 877 35 06
sebastiano.leggio@pewatron.com

Linear position sensors Angle sensors

Eric Letsch
Phone +41 44 877 35 14
eric.letsch@pewatron.com

Drive technology CH Postcode 5000 – 9999 / DE

Roman Homa
Phone +41 76 444 00 86
roman.homa@pewatron.com

Drive technology CH Postcode 1000 – 4999 / AT / IT / FR

Christian Mohrenstecher
Phone +41 76 444 57 93
christian.mohrenstecher@pewatron.com

Accelerometers Sensor elements

Christoph Kleye
Phone +49 89 374 288 87 61
christoph.kleye@pewatron.com

Harald Thomas
Phone +49 89 374 288 87 23
harald.thomas@pewatron.com