

# Characteristics

Unless otherwise specified, all parameters are measured at 25 °C and 60% RH

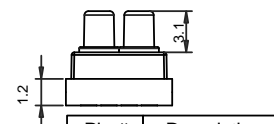
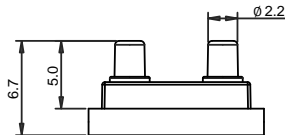
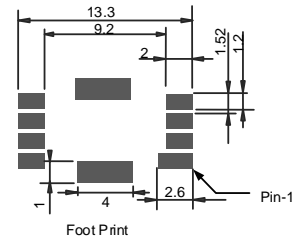
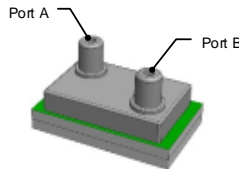
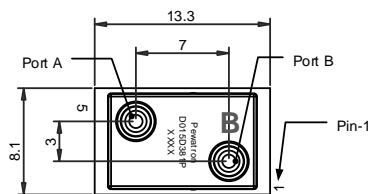
Preliminary

Parameters	Min	Typ	Max	Unit
Excitation	5 Vdc @ 5 mA (2.7 - 5.5 Vdc)			
Pressure range	-1		1	bar
Resolution <sup>1</sup>			16	Bit
Zero Output (0 bar)		0		Dec
Full Scale Output (-/+1 bar)	-25600		25600	Dec
Accuracy(25°C)		0.25		%FS, +1LSB
Accuracy(0/50°C) <sup>2</sup>		1.5		%FS, +1LSB
Accuracy(-20/70°C) <sup>2</sup>		2.5		%FS, +1LSB
Update Rate		1		KHZ
Temp - Compensating	-20		70	°C
Temp - Operating	-20		+80	°C
Temp - Storage	-40		+125	°C
Over Pressure			1.5X	FS
Burst Pressure			3X	FS

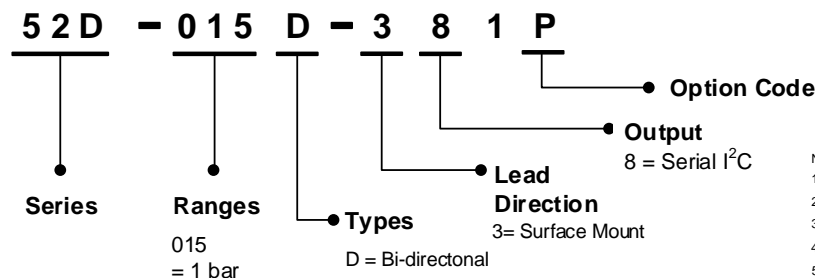
**NOTES:**

1. ENOB = 14 bits
2. Combined accuracy with auto-zero
3. Wetted material contains polyimide, silicon, Au, pyrex, epoxy & FR4
4. The factory setting for I2C slave address is **0x6C** Default

## Dimension



## Ordering Information



Pin #	Description
1	SDA
2	SCL
3	EOC
4	N.C
5	OUT
6	N.C.
7	VDD
8	GND

**Notes:**

1. Port B is used for positive differential or gage
2. All dimensions are mm
3. Soldering of lead pins: 250 °C for 5 sec max.
4. N.C. pins must be left floating
5. Pull-up on SCL and SDA is 1KΩ min.
6. A 0.1 uF capacitor must be connected between V<sub>SS</sub> and V<sub>DD</sub>, and close to the sensor

SCD7-311-A005G  
03-19 R0

Headquarter Switzerland:  
Pewatron AG  
Thurgauerstrasse 66  
CH-8050 Zurich  
Phone +41 44 877 35 00  
info@pewatron.com

Office Germany:  
Pewatron Deutschland GmbH  
Edisonstraße 16  
D-85716 Unterschleißheim  
Phone +49 89 374 288 87-0  
info.de@pewatron.com



**PEWATRON**  
SENSORS · POWER SOLUTIONS

## We are here for you. Addresses and Contacts.

---

### Sales Germany & Austria

Postcode 00000 – 31999  
Postcode 38000 – 39999  
Postcode 80000 – 99999  
Austria

Kurt Stritzelberger

Phone +49 89 260 52 80  
Mobile +49 171 803 41 35

kurt.stritzelberger@pewatron.com

Postcode 32000 – 37999  
Postcode 40000 – 79999

Gerhard Vetter

Phone +49 674 394 75 75  
Mobile +49 163 762 74 30

gerhard.vetter@pewatron.com

**Geometrical sensors**  
**Sensor elements**

Thorsten Ravagni

Phone +49 60 479 53 627

thorsten.ravagni@pewatron.com

---

### Sales Switzerland & Liechtenstein

Postcode 3000 – 9999

Basil Frei

Phone +41 44 877 35 18  
Mobile +41 76 279 37 26

basil.frei@pewatron.com

Postcode 1000 – 2999

Christian Mohrenstecher

Mobile +41 76 444 57 93

christian.mohrenstecher@pewatron.com

### Sales International Key Accounts

Peter Felder

Phone +41 44 877 35 05  
Mobile +41 79 406 49 83

peter.felder@pewatron.com

---

### Sales Other Countries / Product Management

#### Pressure Sensors

Philipp Kistler  
Phone +41 44 877 35 03  
philipp.kistler@pewatron.com

#### Accelerometers / Level Flow sensor elements

Thorsten Ravagni  
Phone +49 60 479 53 627  
thorsten.ravagni@pewatron.com

#### Drive technology CH Postcode 5000 – 9999 / DE

Roman Homa  
Mobile +41 76 444 00 86  
roman.homa@pewatron.com

#### Gas sensors / Gas sensor modules Load cells

Dr. Thomas Clausen  
Phone +41 44 877 35 13  
thomas.clausen@pewatron.com

#### Power supplies

Sebastiano Leggio  
Phone +41 44 877 35 06  
sebastiano.leggio@pewatron.com

#### Drive technology CH Postcode 1000 – 4999 / AT / IT / FR

Christian Mohrenstecher  
Mobile +41 76 444 57 93  
christian.mohrenstecher@pewatron.com

#### Flow / Level / Medical products

Dr. Adriano Pittarelli  
Phone +49 8245 774 95 44  
adriano.pittarelli@pewatron.com

#### Linear position sensors Angle sensors

Eric Letsch  
Phone +41 44 877 35 14  
eric.letsch@pewatron.com

#### Current sensors Power solutions

Osman Coban  
Phone +49 71 635 363 898  
osman.coban@pewatron.com