

Pewatron PHPSU-4502 vs SCX Series

1. Dimensions

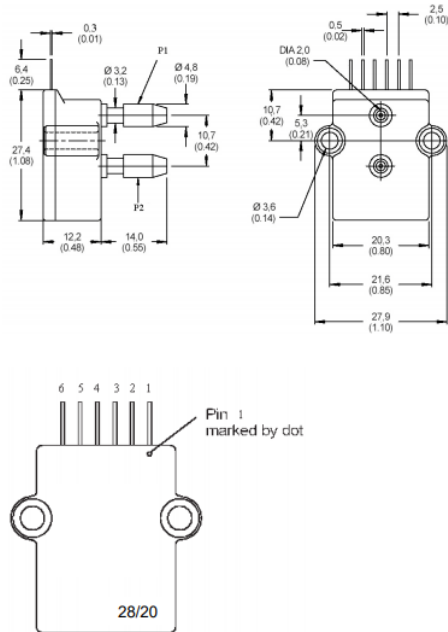


Figure 1: PHPSU-4502

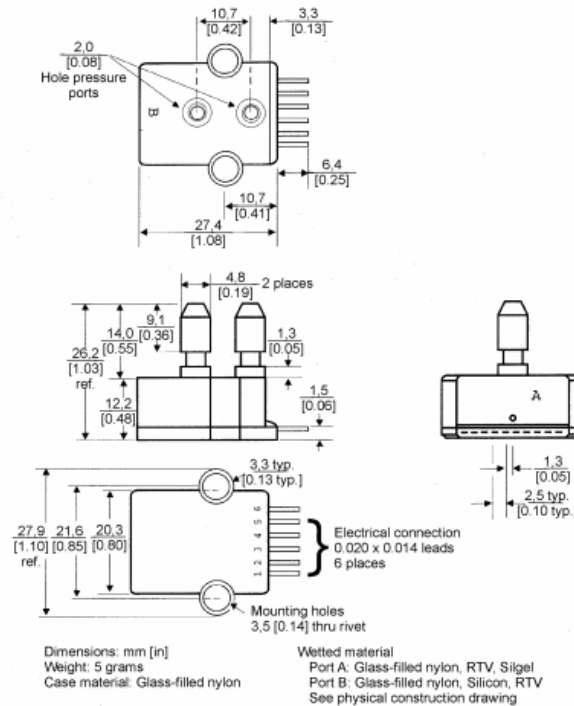


Figure 2: SCX Series

The dimensions are the same on both sensors.

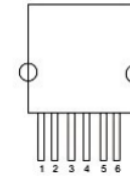
2. Pinout

Pin number	Output
1	Temp out+
2	Vs
3	+OUT
4	GND
5	-OUT
6	Temp out-

Note: Output polarity is defined for positive pressure on port P2

Figure 3: PHPSU-4502 pinout

ELECTRICAL CONNECTION



PIN 1) TEMPERATURE OUTPUT (+)
 PIN 2) Vs
 PIN 3) + OUTPUT
 PIN 4) GROUND
 PIN 5) - OUTPUT
 PIN 6) TEMPERATURE OUTPUT (-)

Figure 4: SCX Series pinout

The pinout of both Sensors is the same. There are no layout changes necessary to use the PHPSU-4502, it is one to one compatible.

3. Performance characteristics

Parameter	Typ. (SCX)	Typ. (PHPSU)	Max. (SCX)	Max. (PHPSU)	Unit
Input voltage	20	12-20			V
Thermal error of span (0 to 70°C)	±0,2	±0,2	±1	±1	%FS
Thermal error of offset (0 to 70°C)	±0,1	±0,2	±0,5	±0,5	mV
Combined linearity and hysteresis	±0,1	±0,2	±0,5	±0,5	%FS
Input impedance	4	25			kΩ
Output impedance	4	4			kΩ
Repeatability	±0.2	±0,05	±0.5		%FSO
Long-term stability of offset and span	±0.1	±0, 1			mV

The characteristics are almost the same and on some points like the repeatability or the long-term stability the PHPSU-4502 easily outperforms the SCX Series.

4. Cross-Reference list

The following list shows which PHPSU-4502 is compatible with which SCX model.

SCX	PHPSU-4502 equivalent	Pressure Range
SCXL004DN	PHPSU4502-004H-D	10mbar
-	PHPSU4502-0P3P-D	20mbar
-	PHPSU4502-0P8P-D	50mbar
SCX01DN or DNC	PHPSU4502-001P-D	70mbar
SCX05DN or DNC	PHPSU4502-005P-D	350mbar
SCX15DN or DNC	PHPSU4502-015P-D	1bar
SCX30DN or DNC	PHPSU4502-030P-D	2bar
SCX100DN or DNC	PHPSU4502-100P-D	7bar
SCX150DN or DNC	PHPSU4502-150P-D	10bar
SCX15AN or ANC	PHPSU4502-015P-A	1bar
SCX30AN or ANC	PHPSU4502-030P-A	2bar
SCX100AN or ANC	PHPSU4502-100P-A	7bar
SCX150AN or ANC	PHPSU4502-150P-A	10bar

Headquarter Switzerland:
Pewatron AG
Thurgauerstrasse 66
CH-8050 Zurich

Phone +41 44 877 35 00
info@pewatron.com

Office Germany:
Pewatron Deutschland GmbH
Edisonstraße 16
D-85716 Unterschleißheim

Phone +49 89 374 288 87 00
info.de@pewatron.com



PEWATRON
SENSORS · POWER SOLUTIONS

We are here for you. Addresses and Contacts.

Sales Germany & Austria

Geometrical sensors Other products

Kurt Stritzelberger
Phone +49 89 374 288 87 22
kurt.stritzelberger@pewatron.com

Pressure sensors Other products

Gerhard Vetter
Phone +49 89 374 288 87 26
gerhard.vetter@pewatron.com

Gas sensors and modules

Peter Felder
Phone +41 44 877 35 05
peter.felder@pewatron.com

Sales Switzerland & Liechtenstein

Postcode 3000 – 9999

Basil Frei
Phone +41 44 877 35 18
basil.frei@pewatron.com

Postcode 1000 – 2999

Christian Mohrenstecher
Phone +41 76 444 57 93
christian.mohrenstecher@pewatron.com

Sales International Key Accounts

Peter Felder
Phone +41 44 877 35 05
peter.felder@pewatron.com

Sales Other Countries / Product Management

Pressure Sensors Load Cells

Philipp Kistler
Phone +41 44 877 35 03
philipp.kistler@pewatron.com

Gas sensors Gas sensor modules

Dr. Thomas Clausen
Phone +41 44 877 35 13
thomas.clausen@pewatron.com

Flow / Level / Medical products

Dr. Adriano Pittarelli
Phone +49 89 374 288 87 67
adriano.pittarelli@pewatron.com

Power supplies

Sebastiano Leggio
Phone +41 44 877 35 06
sebastiano.leggio@pewatron.com

Linear position sensors Angle sensors

Eric Letsch
Phone +41 44 877 35 14
eric.letsch@pewatron.com

Drive technology CH Postcode 5000 – 9999 / DE

Roman Homa
Phone +41 76 444 00 86
roman.homa@pewatron.com

Drive technology CH Postcode 1000 – 4999 / AT / IT / FR

Christian Mohrenstecher
Phone +41 76 444 57 93
christian.mohrenstecher@pewatron.com

Accelerometers Sensor elements

Christoph Kleye
Phone +49 89 374 288 87 61
christoph.kleye@pewatron.com

Harald Thomas
Phone +49 89 374 288 87 23
harald.thomas@pewatron.com